



**EASY +**

**QUICK +**

**FLEXIBLE +**

**ACCURATE +**

**FAST STRIP LAYOUT +**

**POWERFUL UNFOLD +**

**3D COMMUNICATION +**

**COMPLETE TOOL DETAILING +**

**PRODUCTION-READY-LIBRARY +**

**SMART FEATURE RECOGNITION +**

**HIGH ASSEMBLY PERFORMANCE =**

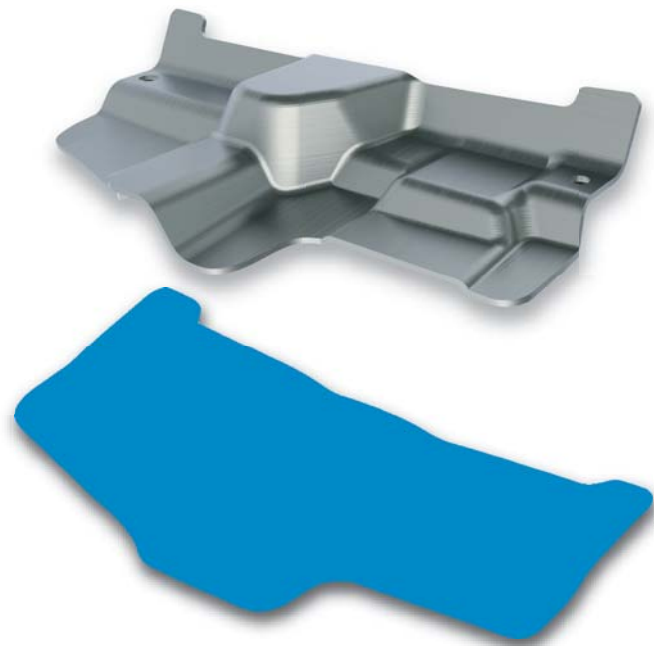
POWERFUL  
**TOOL DESIGN**

**SOLUTIONS**

by 3D QuickTools

# unfold

- Special modeling tools for cleaning data
- Powerful modeling functions
- Strong automatic metal feature recognition
- Handle deformed features, bends & bend allowance
- Generation of blank shape and layout
- Supports different bend conditions
- Organized unfolding manager
- Supports design for manufacture
- Extract identical features
- Copy Forming steps
- Hole cluster
- Multiple thickness part
- Coining
- User-defined feature
- Export Face with SOLIDWORKS® annotation

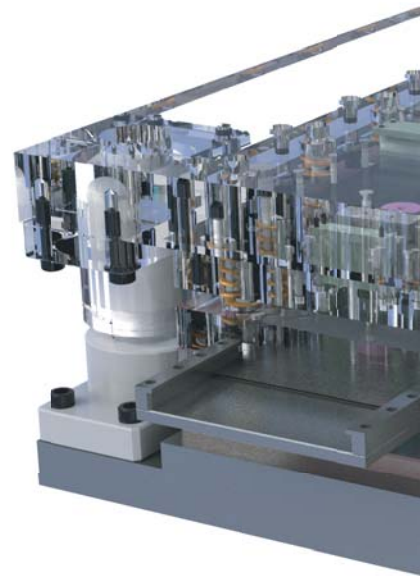


## WORLD WIDE SUPPORT MEDICAL PARTS

CONNECTORS, TERMINALS MACHINERY PARTS

ELECTRONICS STANDARD

PROVEN PRECISION PARTS



## strip layout

- Support drag & drop
- Support insert/delete stations
- Instant 3D feedback
- Strips for unlike parts
- Scrap design
- Feature renaming
- Stock optimization
- Centre of force calculation
- Springback
- Intelligent strip layout with automatic associative properties
- Deep draw calculator
- WYSIWYG blank positioning
- Display enhancement
- Features Group
- Clone internal notching to identical holes
- Annotation feature
- Swap Part
- Edit Swap Face
- Nesting in station layout
- Mirror unfold part
- Export to Excel® for costing



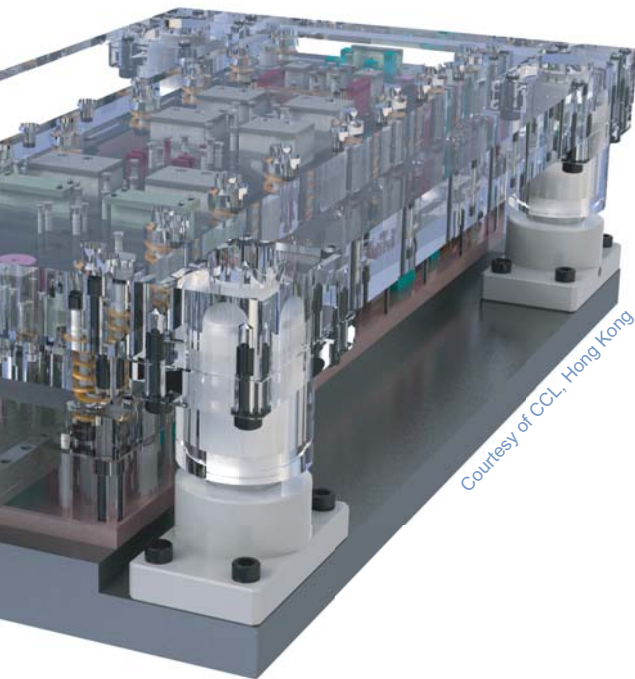
# dieset



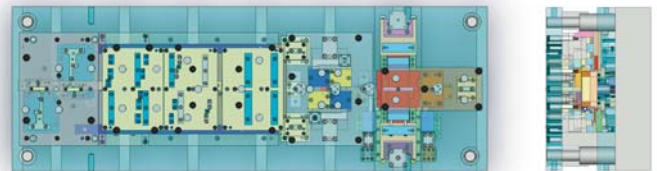
- Auto creation of cutting & bending punches
- User defined punch
- Die inserts
- Punch features are fully editable
- Production-Ready-Library
- Easy customization without programming
- Punch design utilities
- User definable databases
- Automatic hole creation
- Edit hole table
- Tools for component placement
- Support compound die and transfer die
- Interference detection

- Structured die set assembly
- Standard & user definable components w/o programming
- Tools for modifying die set structure
- Simulation of die mechanism
- Standard catalog components
- Automatic BOM & QuickDrawing
- Assembly drawing generation
- Sort balloon
- Auto-ordinate dimensioning
- Report generation
- Change over tooling
- Concurrent design environment
- Create cutting punch

- Round punch for ob-round hole
- Export face in user defined component
- Link Manager
- Translate components in polar direction
- User interface to adjust die set center
- Quick start die design optimized for stage and transfer tools
- Quick standard component insert
- Automatic component insert & hole creation
- Fast automatic cavity creation
- Fast update
- Relief cut function



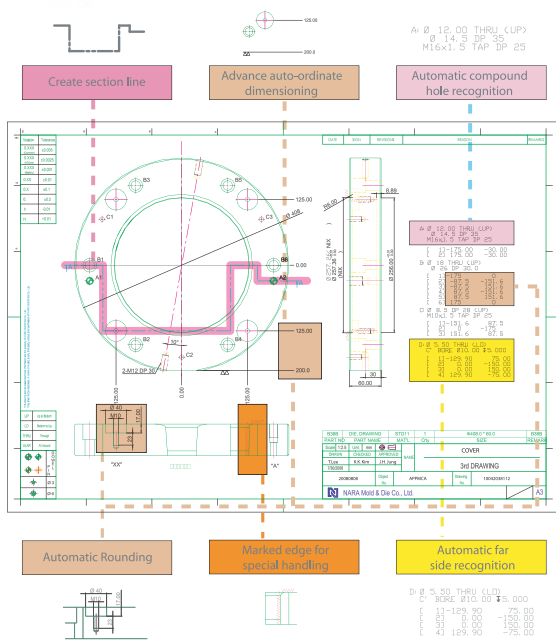
Courtesy of CCL, Hong Kong



Courtesy of Precision Tool System, US



## drawing & manufacturing



- Create section line
- Advance auto-ordinate dimensioning
- Automatic compound hole recognition
- Automatic Rounding
- Marked edge for special handling
- Automatic far side recognition

- Versatile hole table
- Section line
- Hole callout
- Edge annotation
- Sketch Tools
- Design to manufacturing integration
- Support wirecut machining

# TOOL DESIGN SOLUTIONS

[www.3dquicktools.com](http://www.3dquicktools.com)

Courtesy of Nara Mold & Die Co., Ltd., Korea

# TOOL DESIGN

*OUR FOCUS IS YOUR SUCCESS*



[www.3dquicktools.com](http://www.3dquicktools.com)

