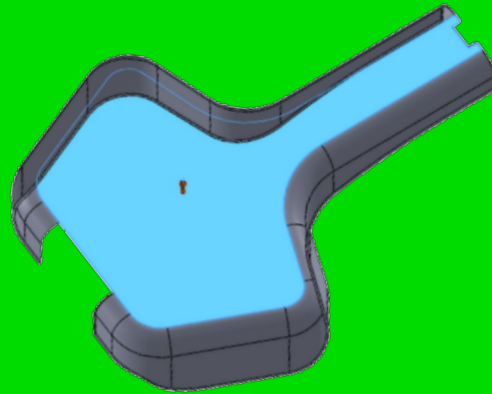


# UFR Flange

The new **UFR flange** function allows users to use different methods for creating the flat pattern of a feature. Users can now unfold flange with high geometrical accuracy with fewer mouse clicks.



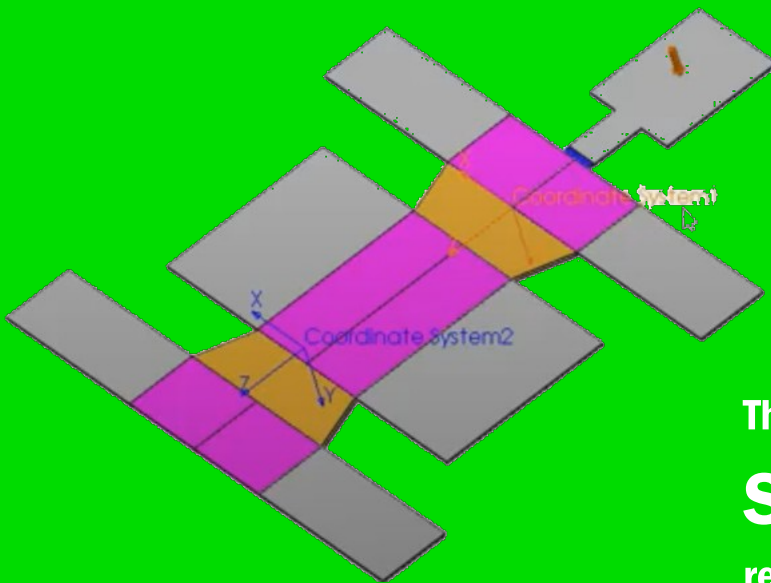
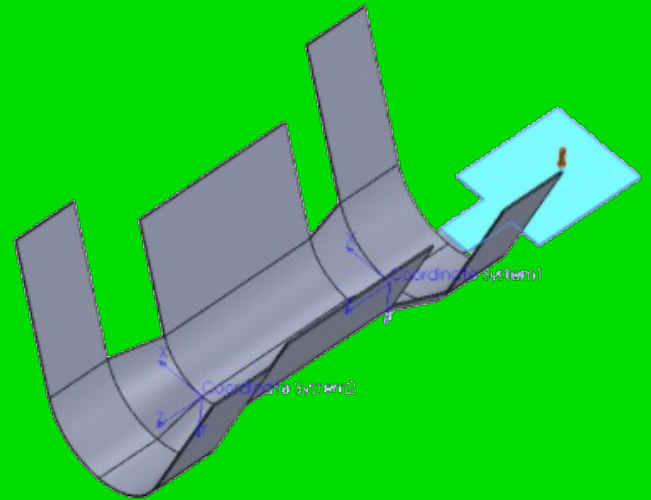
CERTIFIED  
Gold  
Product

 SOLIDWORKS

# freeform

Unfolding **freeform**

**surfaces** found in electrical terminals pose no challenge to users with the new UAR Loft Section function. The transitional features that join up axial bends in terminals can now be easily unfolded to a flat pattern without much manual works.



# loft

The new **UAR Loft**

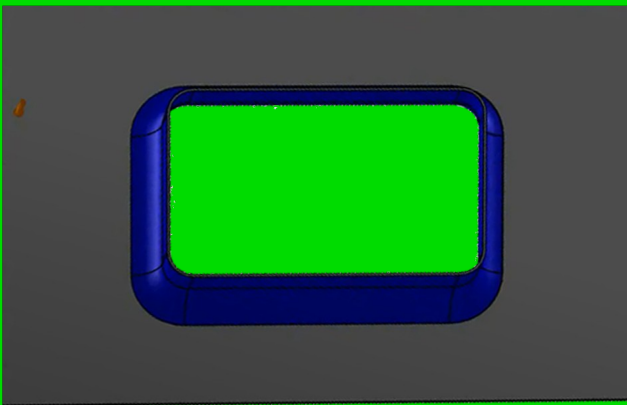
**Section** function gives the resources to designers to focus on optimizing design rather than spending their valuable time to do modeling.

CERTIFIED  
Gold  
Product

 SOLIDWORKS



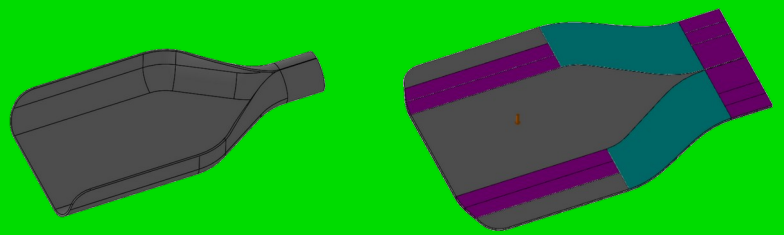
**Auto extract** is enhanced to support more UAR features than just gusset feature found in standard version. Users just specify the feature location and the adjacent faces, the system will auto-select the complicated features.



# Auto Extract

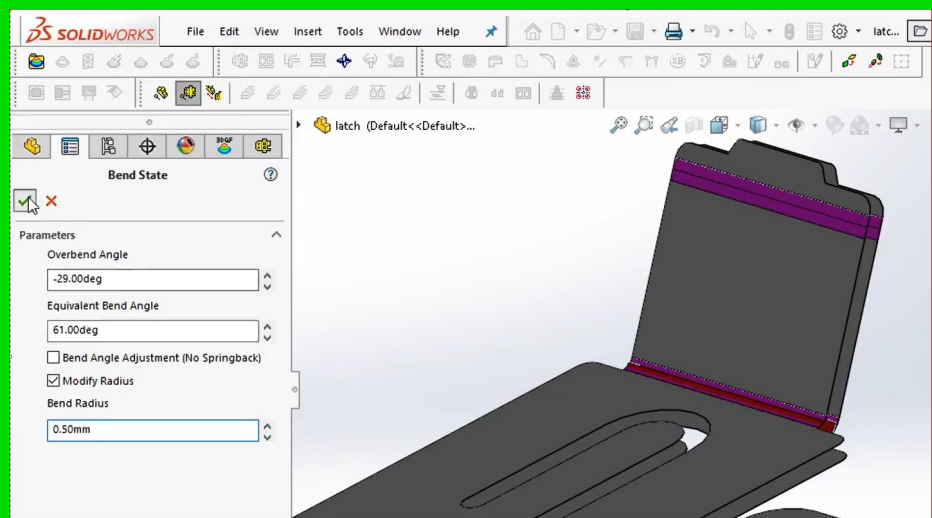
CERTIFIED  
Gold  
Product





# Unfolding Stages

Users can study the **Unfolding Stages** with or without spring back. Multiple bend states can be created to facilitate users to design process features like restrike. Users can create or edit **split bends**. It allows the users to specify the number of sections to split the selected bend or the section bend angle values.

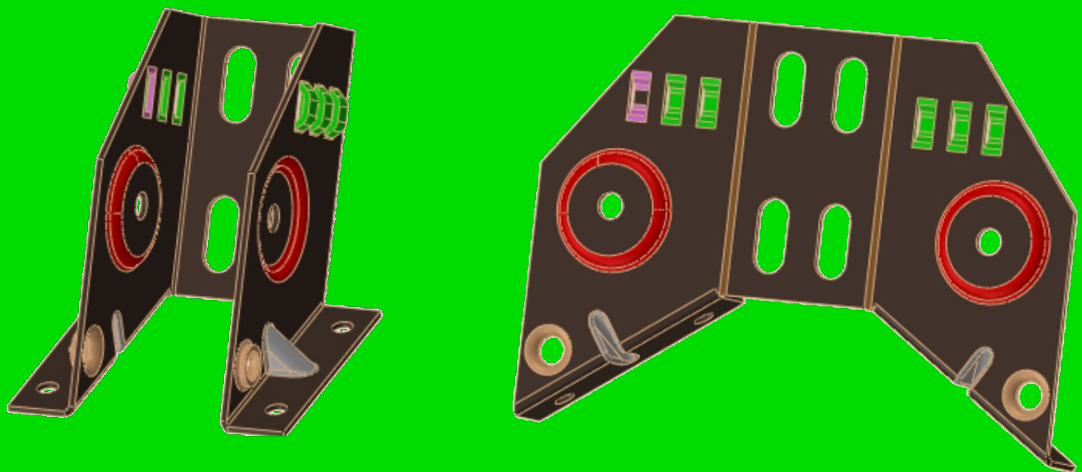




# Solid Unfold

3DQuickPress Professional gives a new alternate approach to perform solid unfolding and solid strip layout. This compliments 3DQuickPress powerful unfolding and strip layout functions. The solid approach enables users to quickly unfold standard sheet metal features with a very short learning curve.

**& Strip layout**



CERTIFIED  
Gold  
Product

 SOLIDWORKS



**More functions  
can be found  
here**



[www.3dquicktools.com](http://www.3dquicktools.com)

